

ARTS MARGARET RIVER

2014

ANNUAL REPORT



Arts Margaret River celebrated our 40th birthday in 2014.





2014 ANNUAL REPORT

ARTS MARGARET RIVER

ARTS MARGARET RIVER is the Arts Hub in and for the Shire of Augusta-Margaret River and the greater Cape-to-Cape region in the southwest of Western Australia.

ARTS MARGARET RIVER was founded by a small group of dedicated volunteers in 1974 and forty years later it continues to thrive from the efforts and dedication of our FIVE ENDURING PILLARS:

our MEMBERS,
our dedicated VOLUNTEERS,
our generous SPONSORS (State, Shire and other donors),
our COMMUNITY (including businesses)
and of course our AUDIENCES.

Our programs of cinema, live theatre and music, literature and visual arts continue to grow, supported by our partnership with the Shire of Augusta-Margaret River, long-term support from the Government of Western Australia, businesses in its region, and lovers of the arts who live, work and play in the region.

2014 was a year of transition for Arts Margaret River and the Arts Hub. During 2013 a number of changes were made in the organisation's structure and Constitution. Our acceptance late in 2013 of a formal agreement with the Shire making us responsible for managing the Shire's Cultural and Events Centre, helped to trigger a number of additional important changes. The Board established a Finance Committee, and all bookkeeping and banking functions have been brought in-house. The Board established a Sponsorships Committee to intensify our focus on obtaining sponsorships from businesses and service clubs in the region and charitable donations from private donors.

In September 2014 Arts Margaret River resumed direct control of the Community Cinema from Twilight Cinemas, owner of the digital projector used in the venue since July 2013. To ensure continued high-quality film presentations, Arts Margaret River acquired a new digital projector and continued to manage the cinema with its own staff and volunteers.

A new and much improved database for managing all aspects of our volunteer workforce was implemented and has yielded substantial benefits. Paid-up memberships in Arts Margaret River 'ArtsHub' grew to approximately 352 members at the end of 2014, many of which are family memberships i.e. two or more names on the one membership.

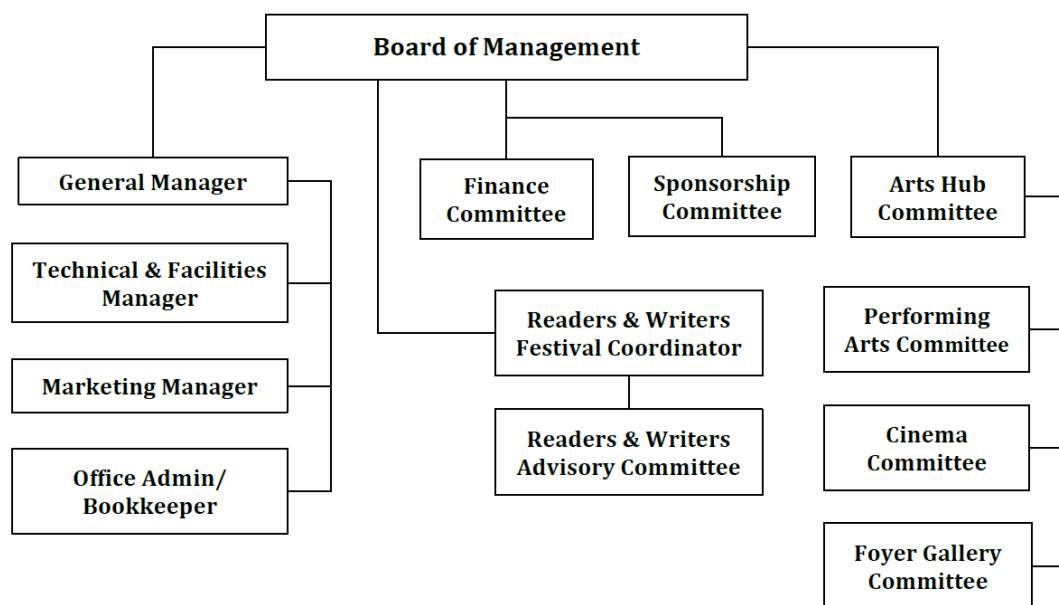
Community engagement was increased across the Shire, with a focus on support for local service clubs, involvement in regional and local cultural and other events, and in Shire communities in Augusta and Cowaramup. Business engagement was enhanced by closer involvement with the Chamber of Commerce and Industry and other like-minded bodies. Artistic development was enhanced by improvements being planned for the Foyer Gallery, a rare exhibition of indigenous art, and growing recognition of our Readers and Writers Festival, now one of only two regional literature events in the State.

We continued an active and broad-based marketing program, including press and editorial support, print and outdoor media, targeted direct mail and email, a monthly newsletter to over 400 subscribers and a Facebook account that has grown steadily in followers.

Arts Margaret River Inc. is a not-for-profit incorporated association in the State of Western Australia, and is registered with the Australian Charities and Not-for-Profits Commission.



OUR ORGANISATION



PRESIDENT'S REPORT

My fellow Arts Hub Members, Volunteers, Board of Management members and loyal hard-working staff of Arts Margaret River.

2014 was a good year for Margaret River's Arts Hub. It was our fortieth year since a few visionary volunteers of earlier generations began our story when this community was a much smaller place. Our membership continues to grow, reaching 350 at the end of the year, and our volunteers now number more than 130. From this strong base, we entertained more than 9,000 ticketed patrons, more than 3,000 of these in our community cinema. There were 46 bookings by community groups and five by business organisations, bringing the grand total of all users of Margaret River's Cultural and Events Centre to more than 21,000 people in the year by our estimate.

Our 2014 program presented to the Augusta Margaret River community and visitors was a big one with many memorable highlights. These included 21 live shows in this entertainment venue, at Cowaramup and Augusta, three simulcasts shown on our big screen, our 40-year Arts Hub members' celebration and our first rock 'n' roll dance. Movies were presented at least twice a week with more during School holidays. There were very successful monthly gallery exhibitions, and a session of Arm Chair Gardening. Our flag-ship Margaret River Readers and Writers Festival has continued to grow and is achieving strong recognition in the State and gradually ... building on Margaret River's powerful Brand ... also nationally.

2014 was the first year of three in our Venue Management Agreement with the Shire. I thank the Shire, its Chief Executive and staff and all members of the Augusta Margaret River Shire Council for their financial support and for their faith in us. We are paid a fee (\$230,000 in 2014) for managing this venue, which helps us to pay for its running costs and our other expenses. We are also grateful for the Shire Council providing to us a one-off 'Programming Grant' of \$40,000. This will help us to manage the financial risks coming from the humps and hollows in our month-to-month cashflow and to be a little more adventurous in our programming. Our income and our profit do not include this Grant.

In March and June 2014 we voted to amend our Constitution, firstly to insert procedural changes required by WA's regulator of not-for-profit associations, and more significantly to change our annual accounting period to end on 31 December, and to establish a Public Fund to accept private charitable donations. This will be activated when we are given Deductible Gift Recipient) tax status, hopefully in the near future.

Mentioning dollars and cents, I am very happy to tell you that we recorded a surplus from our operations in 2014 of \$8,633.61, which was a very welcome improvement of nearly \$50,000 on the result in 2013. The reality was better than this, as we also included a provision for depreciation in this year's expenses. Our total turnover was more than \$540,000.

Our income included \$124,000 in cash grants and donations from almost sixty sponsors, large and small, private and government, local and State. A few were in-kind sponsors. It is a list of the Who's Who in Margaret River's region and beyond, and we thank every one of them. All are listed in my written report. I hope I have not missed any.

There were some notable achievements in 2014. You cannot have missed the big improvement in presentation of our venue, for which the leadership given by Phil Bebb must be recognised.

Likewise, the greatly improved quality and reliability of the sound in our cinema. Replacing and rebuilding all equipment in the Fly Tower has just been completed by the Shire, at a cost of \$355,000. With this has come replacement, repair or repainting of the stage curtains and surrounds. All of this was managed by Phil Bebb on behalf of the Shire and Arts Margaret River.

In October 2014 we took possession of a new digital projector and related equipment, funded by a five-year loan and by a grant from the South West Development Commission. This was made necessary by the departure of Twilight Cinemas who had operated the cinema for a year. To show there is a silver lining behind every screen, this has given us back our cinema, re-energised our cinema volunteers and improved the quality of the films being presented.

We were supported by our indispensable Arts Hub volunteers and our very loyal and hard-working staff. I would like to mention all those who are here tonight and were with us through all or most of 2014: Stephanie Kreutzer, who in 2014 was our part-time marketing and social media manager (plus in practice much else). Phil Bebb, our technical and venue manager, whose calm and supportive presence is ensuring the growing quality of our shows and presentation of the venue. Kaye Campbell, our very diligent and efficient part-time office manager, bookkeeper and support for our very able Finance Committee – we call it our Finance Team, which is very ably led by Bryan Timmons – whose efforts are evident in our greatly improved profit result for this year. And finally Helen Allan, the Director and one-person whirlwind organiser of our Readers and Writers Festivals and Sean Locke, the coordinator of our Cowaramup Sunday Sundowners.

I should say “and much else besides” for every one of these people. While this looks, feels and is a very small ‘business’, there is much work to do. Our General Manager Hal Martin was also part of this team during most 2014, and resigned from Arts Margaret River in February 2015.

I must also mention and thank our devoted volunteer teams, and those members who meet monthly as the Arts Hub Committee, to help steer and present our programs, and help to keep our volunteer teams informed and committed. Here I should pay tribute to life Member Jack Knudson, who retired from his role as Volunteer Coordinator at the end of the year. This role is now being shared by Ian Smith and Pam Townshend.

Outcomes achieved in 2014 are tangible evidence of strong financial management and strengthening ‘governance’ of Arts Margaret River by our eight-member Board of Management. They have worked hard during the year. The Board of Management meets once a month and some of its members have other roles in our Arts Hub. My very genuine thanks go to all of them for the support they have given to me during the year: Rob Rumball (Vice President), Anne Shepherdson (past President), Pierre Every (Treasurer), Niomi O’Hara (Secretary), Bryan Timmons, Mignon Birch and Bill Castleden. Jeanette Sangmeister was unfailing in keeping minutes and dealing with other paperwork. I must mention the Shire’s plans to upgrade and enlarge this venue, to which Arts Margaret River has given its very strong and public support. You can see the details of these plans here on the wall and on our website www.artsmargaretriver.com. I urge you also to write to the Shire President or the Shire CEO or both to express your personal support for this vitally important community project.

There are many more creative and fun things to come from Arts Margaret River in 2015.

Fred Affleck

President

PERFORMING ARTS

SUNDAY SUNDOWNERS

Every Sunday in February we host a FREE concert in Pioneer Park, Cowaramup. This year was the 12th year that the Sundowners took place. They have grown in popularity and are well attended by family groups from Cowaramup, Margaret River and outlying areas. Each Sunday volunteers are stationed at entry points to collect 'gold coin' donations on entry, and the enjoyment of attendees is reflected in the increase in donation amounts each year.

This year's concerts featured:

Sunday 2nd - *Olivia and Jazztrix*

Sunday 9th - *Tony Lane and The Impressions*

Sunday 16th - *Munk and Big Bark Boogie*

Sunday 23rd - *Margaret River Concert Band and Doxy*

Event Coordinator: Sean Locke

Audience: Approximately 2000

Performance fees: \$7181

Lotterywest contribution: \$7500

Cowaramup retailers contribution: \$1800



MIDSUMMER WITH SONGS

Tuesday 4 February, 7.30PM

Margaret River Cultural Centre

Adults \$35, Friends \$25, Special offer if booked with membership renewal \$20

Audience: 144

Performance fee: \$5000

Box Office takings: \$ 3000

Lotterywest contribution: \$3000



A Black Swan State Theatre Company production

Two strangers meet in a bar. She's totally out of his league; he's not her type at all. They absolutely should not sleep together, definitely not after this much wine. But they do.

In the early morning light they part ways, but are reunited in a chance encounter when they are both a bit desperate. From there, they begin a legendary lost weekend - full of hangovers, ruined weddings, a bag of stolen money, Goth kids, Japanese rope bondage ... and maybe love!

Midsummer [a play with songs] is definitely not Shakespeare, and definitely not for children!

TOSCA—WA OPERA SIMULCAST

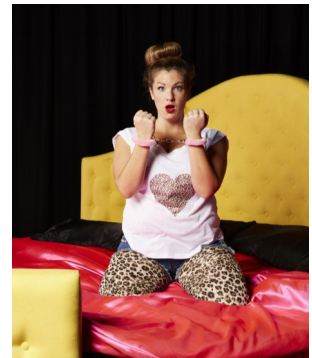
Saturday 15 February, 7.45pm
Margaret River Cultural Centre
FREE event
Audience: 133
Lotterywest contribution: N/A
Show Cost: NIL



An opera in three acts and sung in Italian with English surtitles, the City of Perth's Opera in the Park is broadcast live from the Supreme Court Gardens to regional centres throughout WA, thanks to the support of Lotterywest. Featuring the West Australian Opera Chorus and the West Australian Symphony Orchestra

51 SHADES OF MAGGIE MUFF

Thursday 6 March, 8pm
Margaret River Cultural Centre
Tickets: Adults 49.90, Arts Hub \$44.90, Group 8+ \$39.90
Audience: 118
Show Hire in



Meet Maggie Muff. She's smart, streetwise and looking for love in all the wrong places. Funnier, sexier and certainly much ruder than Shirley Valentine, 51 Shades of Maggie Muff has sold out its run at every venue where the show has played. This is the number one best selling spoof play of a certain 'Shades of Grey' novel.

Age 18+

ACO2

Tuesday 8 April, 7.30pm
Margaret River Cultural Centre
Tickets: \$65 Adults, \$50 Arts Hub, \$25 Youth
Audience: 79
Performance fee: \$7500
Lotterywest contribution: \$4500
Box Office Takings: \$ 4345



ACO2 connects the next generation of talented young Australian musicians with the stars of the ACO, creating a combined ensemble with a fresh, energetic performance style. The young musicians have all participated in the ACO's Emerging Artist Program & many already play in the state symphony orchestras but choose to spend time experiencing the ACO's high-octane performance style.

MR MCGEE AND THE BITING FLEA

Wednesday 23 April, 10.30am & 3pm (school holidays)

Margaret River Cultural Centre

Ticket prices: Adults \$22, Arts Hub \$17, Youth \$12, Group \$10

Audience: 521 (total 2 shows)

Performance fee: \$7614

Lotterywest contribution: \$4500

Box Office Takings: \$ 8117



Six whimsical stories by award winning children's writer, Pamela Allen, emerge from dozens of suitcases and crates as three curious warehouse workers transform a storeroom into enchanting little miracles of music and play. Wonderful school holiday entertainment that was well attended.

TASHI

Saturday 3 May, 10.30am & 1pm

Margaret River Cultural Centre

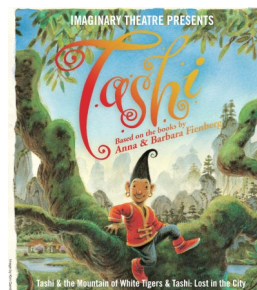
Tickets: \$22 Adults, \$17 Arts Hub, \$12 Youth, Family \$60, Arts Hub Family \$55

Audience: 245 (total 2 shows)

Performance fee: \$6452

Lotterywest contribution: \$4,500

Box Office Takings: \$ 4471



Imaginary Theatre presented their exciting adaptations of two of Anna and Barbara Fienberg's well-loved TASHI book series: Tashi and the Mountain of White Tigers and Tashi: Lost in the City. Very well received by children and their families. A competition was run in conjunction with the AMR Times with Tashi book packs as the prizes.

CALENDAR GIRLS

Wednesday 28 May, 7.30pm

Tickets: Adults \$40, Arts Hub Member \$34, Group 6+ \$35

Audience: 135

Performance fee: \$7240

Lotterywest contribution: N/A

Box Office Takings: \$ 4938



Jally Productions present UK stage sensation "Calendar Girls". Calendar Girls is quirky, poignant and hilarious. Adapted by Tim Firth from the Miramax film of the same name, it is based on an uplifting and very inspiring true story.

AS YOU LIKE IT SIMULCAST

Friday 30 May, 8pm

Margaret River Cultural Centre

Tickets: \$10 Adults, FREE Arts Hub

Audience: 33

Lotterywest contribution: N/A

Show Cost: NIL

All promotion done by Black Swan State Theatre. A disappointing turn out for a low cost event.

MELBOURNE INTERNATIONAL COMEDY FESTIVAL

Sunday 1 June, 7.30pm

Margaret River Cultural Centre

Tickets: Adult \$50, Arts Hub \$42

Audience: 344

Performance fee: \$5500

Box Office Takings: \$16752



The annual Comedy Roadshow is very popular and sells out every year. For many patrons this is the only Arts Margaret River event that they attend during the year. It attracts a younger audience than regular theatre goers. The bar is open before the show and during intermission and makes a very healthy profit for the night.

PETE THE SHEEP

Monday 23 June, 1.30pm

Margaret River Cultural Centre

Tickets: Adults \$18, Arts Hub \$15, Children \$15, School \$10

Audience: 66

Performance fee: \$4,546

Lotterywest contribution: \$4500

Box Office Takings: \$907



This hilarious musical comedy, imaginatively told by four performers playing shearers, dogs and sheep, explores the challenges and rewards of being an individual, and will be a lasting tribute to honouring your own spirit and strength, whilst working with the flock! For ages 3-9.

This was a wonderful production that was held during school term. Unfortunately only one small school group committed to attending the show in addition to a home schooling group.

ALVIN SPUTNIK

Wednesday 16 July, 7.30pm

Margaret River Cultural Centre

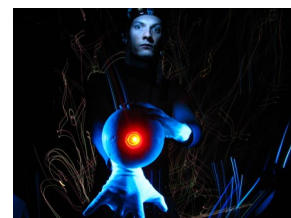
Tickets: \$30 Adults, \$25 Arts Hub, \$15 Youth, Family \$72, AH Fam \$64

Audience: 100

Performance fee: \$ 3850

Lotterywest contribution: \$4,500

Box Office Takings: \$1690



A highly imaginative fusion of animation, puppetry, projections, live and recorded music, Tim Watts, told the tale of Alvin Sputnik, deep sea explorer, and the search for his lost love in the seemingly endless depths of the ocean. A good family show suitable for all ages.

ITS DARK OUTSIDE

Thursday 17 July, 7.30pm

Margaret River Cultural Centre

Tickets: \$35 Adults, \$30 Friends, \$15 Youth, Group 8+ \$30

Audience: 66

Performance fee: \$3850

Lotterywest contribution: \$3,500

Box Office Takings: \$ 1560



From the Alvin Sputnik team, using puppetry, animation and live performance this show told the tale of redemption and dementia. It was a very hard sell, many comments received saying that they did not want to see a show about such a sad and depressing topic. In an attempt to increase ticket sales, a special half price ticket was offered to Alvin Sputnik attendees.

STILL AWAKE STILL

Friday 15 August, 10.30am—Margaret River Cultural Centre

Tickets: Adult \$23, Member \$18, Youth \$14, School \$12, Group 10+ \$15

Audience: 97

Performance fee: \$7425

Lotterywest contribution: \$4,500

Box Office Takings: \$ 1440



This music theatre show is based on the much-loved songs from the bedtime book I'm still awake, still! Suitable for ages 4 plus, this show was held during the school term with a school group and mothers with young children attending. The show was followed by a one hour free workshop in the auditorium.

THE 39 STEPS

Friday 12 September, 7.30pm—Margaret River Cultural Centre

Tickets: Adult \$50, Member \$42, Youth \$20

Audience: 97

Performance fee: \$6,500

Lotterywest contribution: \$3,500

Box Office Takings: \$4148



Based on the 1935 Hitchcock spy thriller. This Hit Productions performance is a fast-paced, side-splitting comedy featuring over a hundred characters played by four actors.

LIOR

Saturday 13 September, 7.30pm- Margaret River Cultural Centre

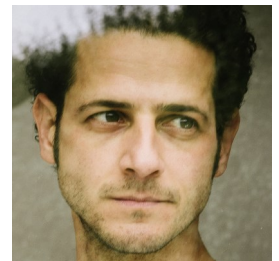
Tickets: Adult \$40, Member \$35

Audience: 108

Performance fee: \$4,250

Lotterywest contribution: NIL

Box Office Takings: \$4180



Contemporary musician Lior, performed an intimate solo set featuring songs from his new album. Supported by Melbourne singer-songwriter, Domini Forster. Live contemporary music has been very well received in the past, unfortunately this show coincided with a live Football final featuring the Dockers and audience attendance was affected by that.

61 CIRCUS ACTS

Wednesday 29 October, 7.30pm- Margaret River Cultural Centre

Tickets: Adult \$25, Member \$20, Youth \$17, Family \$75

Audience: 230

Performance fee: \$5,000

Lotterywest contribution: \$2,500

Box Office Takings: \$4558



Circa's family show set to upbeat music and featuring four multi-skilled performers. Well attended show with many family groups and thoroughly enjoyed by all.

WUNDERKAMMER

Thursday 30 October, 8pm—Margaret River Cultural Centre

Tickets: Adult \$45, Member \$38, Youth \$25, Family \$120

Audience: 104

Performance fee: \$2500

Lotterywest contribution: \$2,500

Box Office Takings: \$4068



Circa presents new circus, cabaret and vaudeville in this sexy and fully 'adult' show suitable for ages 15 plus. A special offer of half price Adult and Youth tickets if tickets purchased to 61 Circus Acts as well—13 people took up this offer.

BOMBSHELLS

Saturday 8 November, 7pm—Margaret River Cultural Centre

Tickets: Adult \$40, Member \$35, Youth \$20, Group 6+ \$36

Audience: 82

Performance fee: \$5,000

Lotterywest contribution: \$2,500

Box Office Takings: \$ 3026



Multi-award winning Australian playwright and author Joanna Murray-Smith's highly acclaimed play Bombshells is a journey from crisis to hilarity, via the secret thoughts of a group of women all linked by more than just their proximity to the edge.

AUSTRALIAN YOUTH ORCHESTRA STRING QUARTET

Sunday 30 November, 7pm- Margaret River Cultural Centre

Tickets: Adult \$12, Member \$10, Youth \$5

Audience: 86

Performance fee: NIL

Lotterywest contribution: NIL

Box Office Takings: \$880



SYMPHONY IN THE CITY—WASO SIMULCAST

Saturday 13 December, 7.30pm- Margaret River Cultural Centre

Tickets: Free event

Audience: 230

Performance fee: NIL

Lotterywest contribution: NIL



A great free event at the time of year when no other performing arts shows were on. The date for the simulcast was ideal for a pre-Christmas event and we linked it to our Arts Hub Christmas Party where volunteers and members were encouraged to stay for the simulcast after the Arts MR celebrations. A few visitors to Margaret River attended the simulcast as it was advertised widely in metro and rural papers.

LITERARY ARTS—READERS & WRITERS FESTIVAL

Wednesday 15—Sunday 19 May

Festival Coordinator: Helen Allen

TICKET Sales: \$26,232

Profit: \$1,269



The sixth annual Margaret River Readers & Writers Festival was the longest and biggest we have run. It was a success in terms of author and participant feedback, ticket sales and the raising of the profile of the festival. The aim to ensure the festival was run professionally, to increase knowledge of the event, and to raise more revenue through ticket sales were all met.

Authors enjoyed the relaxed nature of the event and the opportunity to meet and talk to their readers. The verbal and written feedback from patrons and authors has been positive as to the good organisation of the festival and the 'warm' feeling throughout the festival.

Patrons enjoyed the chance to enjoy a wide range of sessions within a stimulating and friendly environment.

The young Readers and Writers Festival children's literature component set a new attendance record, with 1140 students from Years 1-7 in seven local primary schools enjoying hearing from three literature specialists, an author, an illustrator and a graphic novelist.

Total ticket sales over the course of the week (Young Readers & Writers and Adult festival) was 633 adult tickets and 1140 children's tickets.

A big success this year was the inclusion of individual ticket sales for individual speakers.



HIGHLIGHTS

Young Readers and Writers Festival

(1140 students – record attendance) Post-Festival feedback from schools has been positive. It is recommended next year the date be changed away from Naplan and away from the adult festival, in order to facilitate a bigger festival which would incorporate the high school.

\$1 book sale. People commented how much they loved the books being all around the foyer and only wished there were more. We sold hundreds of dollars' worth of books and added to the 'literary festival' feel.

A glass of wine and a good book, more than 70 people attended this function at a local wine bar. It is recommended more functions be held at community venues to spread business and the opportunity for people to enjoy late evening literary functions. The big sign outside the tourist bureau, as a consequence of tourist association sponsorship, attracted enormous attention to the festival for locals and visitors alike and enhanced the profile of the festival.



VISUAL ARTS

JANUARY – OLIVIA LANCASTER

This was the first solo exhibition for Olivia. She recently started offering art classes in Margaret River and in Busselton and this exhibition was an opportunity for her to promote her classes as well as display her works.

As the Cultural Centre was to be closed for 2 weeks over the Christmas break. Olivia's exhibition ran from December until the end of January 2014.



FEBRUARY – LEANNE CHADWICK

This was Leanne's first exhibition. Since 2003 She has regularly attending weekly painting classes and has become more confident in her work. She paints a variety of subjects including landscapes, portraits and abstracts and focuses on colour and texture.

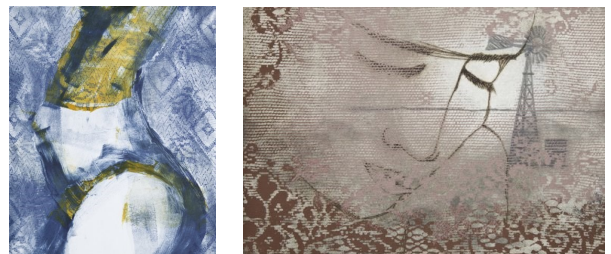
Leanne featured 26 pieces in her exhibition, of which 8 were sold.



MARCH – ROBYN COLLINS

Robyn Collins studied art and design and teaches sculpture classes at TAFE. She has exhibited in group exhibitions but this was her first solo exhibition.

Robyn featured 29 pieces in her exhibition, of which 7 paintings were sold.



APRIL – DENISE LAWSON AND SHANNON BENDALL

Denise exhibited in the Arts MR Foyer Gallery in 2011 and sold all of her paintings plus received 5 commissions. She started painting in 2008 and joined a painting class in 2010. She entered a few art awards and won the Shark Bay Arts Council's People's Choice Award in 2011 and 2012. Denise featured 12 pieces in this exhibition, of which 8 pieces were sold.

Shannon studied art in High School and is a self taught Calligraphist. She has written in wedding albums, invitations, chalk boards and menus and has sold a few paintings that were displayed at local restaurants where she worked.

This was her first exhibition. Shannon featured 12 pieces of which 4 pieces were sold.



MAY - JOURNEYS [VISUAL STORIES EXHIBITION & COMPETITION]

The 3rd year that the Visual Stories Competition Exhibition was held as part of the Readers and Writers Festival.

A record 80 entries were accepted and exhibited with an additional few disqualified due their size exceeding the acceptable limit.

The prizes were increased this year with a \$1000 1st prize, \$500 2nd prize and \$250 3rd prize plus a case of Cullen Wine as the People's Choice Award.

The winners of the competition are pictured: Kay Gibson (top) - 1st, Kerry Sibly (Left) - 2nd and Laurie Poser (Right) - 3rd.



JUNE - MARGARET RIVER INDEPENDENT SCHOOL ART AUCTION CONTRIBUTING ARTISTS

The Margaret River Independent School hosts an annual Art Auction as their major fundraiser each year at the MR Cultural Centre. Various artists (mostly SW locals) donate works for the auction. For the first time this year, the artists were also offered the opportunity to display an additional piece to be exhibited in the MR Foyer Gallery for the month of June, with sale proceeds going to the artists.

44 pieces were displayed of which 5 pieces were sold. Prices ranged from \$80 to \$2500 with 23 pieces priced at \$500 and above.

9TH ANNUAL
**ART
AUCTION**
MARGARET RIVER 2014

Friends in the Foyer
Margaret River Art Auction
Contributors' Exhibition

JULY - BRETT HARRISSON

Brett started painting in 2010 due to a degenerative spine disease which ended his career driving cranes. In 2011 and 2012 he participated in a joint exhibition in the local Witchliffe Hall and recently started painting portraits.

This was his first solo exhibition.

Brett featured 17 paintings in his exhibition (of which 9 were portraits), and he sold 4.



AUGUST - SKYE ROBERTSON

Skye is a local artist that has been painting for many years. This was her first solo exhibition and her works featured acrylics, pen and ink plus mixed media.

She featured 36 pieces in her exhibition and sold 14.



SEPTEMBER - DANIEL COLLINS

Daniel Collins photographic exhibition was a late entry in response to the September artist cancelling her exhibition due to personal health reasons.

Daniel's exhibition featured a combination of landscapes, wildlife, flora and surf taken at locations in Margaret River and various other WA spots.

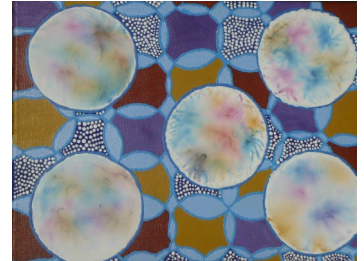


He included 26 different photographs with additional prints available for order. He sold 14 pieces in total of which 6 were of the same image.

As a result of his exhibition, Daniel was commissioned to photograph the Readers and Writers Festival image for 2015.

OCTOBER - MARIE WILLIAMS NOONGAR MOORT EXHIBITION

Marie Williams is a local Noongar artist. She approached Arts MR to hold an exhibition featuring works done by herself and family members plus pieces loaned from the Mungart Boodja Arts Centre in Albany.



This was the first Indigenous exhibition that Arts Margaret held as exhibitions planned in past years never eventuated. To assist Marie, Arts MR prepared an invitation flyer and approached a local winery for sponsorship for the Exhibition Opening. 43 pieces were included in the exhibition, some pieces unframed and some small sizes with prices ranging from \$50 to \$4550, with most pieces under \$500. Only 7 pieces were sold, all of them under \$300 in price. Unfortunately attendance to the Opening was fairly small as Marie did not invite anyone other than her immediate family and was relying on Arts MR to do so. The exhibition was on display for the entire month and was very well received.

NOVEMBER AND DECEMBER—PENELOPE WISE

Penelope Wise is an established local artist that does collage paintings composed of fabric, acrylic paint and found objects.

Penelope featured 31 pieces in her exhibition ranging in price from \$150 to \$4000 with half the pieces under \$500. She sold 11 pieces and had 130 people attend her exhibition opening.

As the December artist pulled cancelled her exhibition at late notice, Penelope was offered the December/ January exhibition space as well.



CINEMATIC ARTS

The newly equipped digital cinema operated for Arts Margaret River by Twilight Cinemas significantly lifted the quality of cinema experience available for our local audiences. The digital projector also made it possible for new release movies to be screened.

Movies were screened on a Wednesday evening and Sunday afternoon with additional matinee screenings during the school holidays.

At the end of August Twilight Cinemas decided to cancel their operation at Arts Margaret River to concentrate on their ventures in the Eastern States. In October Arts Margaret River resumed direct control of the Community Cinema, after approximately one year of operation by Twilight Cinemas.

To ensure continued high-quality film presentations, Arts Margaret River acquired a new digital projector and managed the cinema with its own staff and volunteers. There was a transition period of approximately one month with no cinema screenings during which time Arts Margaret River installed the new projector and trained our Technical and Facilities Manager in cinema projection whilst also retaining the services of projectionists trained by Twilight.

Movie screenings were moved to Friday and Sunday evenings with additional matinees during the school holidays. Ticket prices were reduced to \$12 Adults, \$10 Members and \$7 Youth.

Total attendance at the Community Cinema was 3788 during the year .



Margaret River Cultural Centre
51 Wallcliffe Rd (next to the Shire)
08 9758 7316
www.artsmargaretriver.com

October cinema			
	THE LEGO MOVIE THURSDAY 2 OCT, 11AM All tickets \$7		ERNEST & CELESTINE THURSDAY 9 OCT, 11AM All tickets \$7
	20,000 DAYS ON EARTH FRIDAY 3 OCT, 7PM		BOYHOOD SUNDAY 5 OCT, 6PM
	PRE DESTINATION FRIDAY 10 OCT, 7PM		BLUE VALENTINE SUNDAY 12 OCT, 6PM SUNDAY 19 OCT, 6PM
NO SCREENINGS FRIDAY 17, 24 & 31 OCTOBER			
	BEGIN AGAIN— SUNDAY 26 OCT, 6PM		
Book online or from the box office half an hour before the screening.			
adult \$12 • art hub member \$10 • youth \$7			



SPECIAL PROJECTS AND EVENTS

ARMCHAIR GARDENING—FRIDAY 29 AUGUST, 10AM—3PM

This event was organized by Julie Kinney and Anne Shepherdson as a Fundraiser for Arts Margaret River.

The day featured a variety of speakers including Di Durston and Jenny Jones, rose experts who presented a powerpoint that stretched from Cambridge to Lyon to Baden Baden and Africa, Sangerhausen and Japan. Local Sculptor, Paula Cristoffanini, spoke about the making of her garden in Margaret River and she had some of her amazing garden sculptures on display. Julie Kinney shared her garden travel tours around Great Britain, Portugal, Spain and France as well as various Australian states with the audience.

To add to the event, the foyer was decorated and local craft stallholders were invited. The event also included a soup lunch that attendees enjoyed at long tables in the foyer. Cost: Adult \$55.00, Arts Hub Member \$50 included a delicious morning tea and a light lunch. Only 39 tickets were sold compared to the previous year's sell out event. A lot of people were disappointed that the event did not include attending open gardens as per previous years. Those that attended thoroughly enjoyed the talks and the social and community spirit of the day.



ARTS MARGARET RIVER 40TH BIRTHDAY CELEBRATION —SATURDAY 9 AUGUST

To celebrate this momentous occasion, Arts MR hosted an event to acknowledge all the people who had a hand in making us what we are today.

Life Member, Heather Locke was flown in for the event which included performances from various community groups and a presentation by Heather on Arts Margaret River's beginnings and journey over her time with the organisation. Wine and nibbles were provided and Arts Margaret River Members and Volunteers, AMR Shire Councillors and representatives, Arts MR Sponsors and Supporters were invited.



ROCK AND ROLL FUNDRAISING DANCE —SATURDAY 18 OCTOBER

The Margaret River Agricultural Society approached Arts Margaret River to consider an event on the Saturday night of the Agricultural Show for adults to attend.

As Margaret River does not have many dances it was decided that a Rock and Roll Dance would be organised as a social community event to raise funds for Arts Margaret River. A local Rock –n– Roll band from Cowaramup, **The Impressions**, was booked to perform on the night.

Patrons were encouraged to get dressed in sixties outfits and prizes were awarded for best costume and best dancers.

A team of volunteers were recruited to decorate the venue and assist with drink sales and a 'sixties' supper on the night.

A local dance school was approached to offer Jive lessons to interested people prior to the dance and these lessons were well attended. The dance instructor attended the dance and gave some demonstrations and judged the best dancers on the night.



The event attracted over 80 people and everyone that attended had a wonderful time and requested that the event be an annual one. Tickets were Adults \$20, Arts Hub Members \$15. After costs the event raised \$750 for Arts Margaret River.



AFTER THE FIRE INSTALLATION—NOVEMBER

Marking three years since the November 2011 Bushfires, Arts Margaret River have revealed 12 commemorative sculptures crafted by local ceramic artists Ian Dowling and Matt Griffiths in the gardens between the Cultural Centre and the Shire Administration office.

Arts Margaret River were approached by different fundraisers to facilitate the dome artworks which are semi functional and incorporate tiles with detail and texture that honor the organisations and individuals who helped impacted people at the Margaret River Cultural Centre during the three days of the blaze.

During the development of the project a community workshop brought impacted people together to make prints that were later imprinted on the tiles.

Ian Dowling, also a volunteer firefighter who also worked on the fire front said volunteers worked over many months to bring the project to fruition and funding was donated from a variety of sources.

“The best thing about the project was working with people who had not worked with clay before and then seeing the work they had completed come to life in the sculptures” said Ian Dowling

“Development of the textural works began with a discussion about how people were affected by the fires and the difference having the cultural center as hub made to them.

“Symbols such as a tap can be found on the sculptures springing from stories about melted water meters in the fire zone” he said.

The sculptures create interest in the gardens and are a great acknowledgement of the support that was offered during a stressful time.

The Cultural Centre, local organisations and volunteer firefighters were pivotal in providing comfort and protection for the community and the unveiling of the artworks is a great way to acknowledge this.

